




Shelmore Timber

The Finest Timbers, Sustainably Sourced



www.shelmoretimber.co.uk Call 01785 284 718 email sales@shelmoretimber.co.uk

A logger wearing an orange high-visibility safety suit with reflective silver stripes, a red helmet with a headlamp, and ear protection is using a chainsaw to cut a large tree trunk. The chainsaw is orange and white, with the brand name 'STIHL' visible on the bar. A large amount of wood chips is being kicked up by the saw. The background is a dense forest with green foliage.

Timber is sourced
from our own
managed mature
woodlands on
the 1,500-acre
Norbury Park and
Ranton Estates

Let's talk about the Timber...
The finest timbers, sustainably sourced...

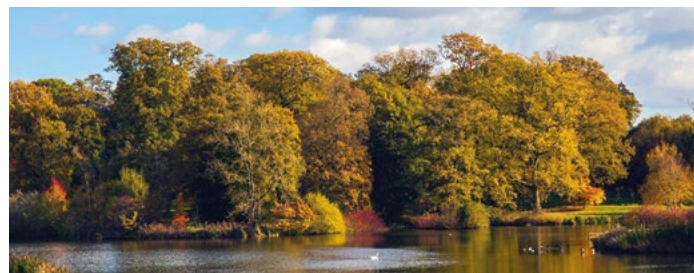
Shelmore Timber stocks and mills some of the finest timber, we are based near Norbury Junction on the border of Staffordshire and Shropshire.

Welcome to Shelmore Timber

We stock a wide range of UK hardwoods, softwoods, West African timbers, beams, boards, cladding, large dimension boards, all of which can be sawn to size. We also offer American hardwoods, flooring and premium quality seasoned firewood logs.

The majority of our UK species timber is sourced from our own managed mature woodlands on the 1,500-acre Norbury Park and Ranton Estates, where we have over half a million trees (oak, beech, sycamore, larch, sweet chestnut, etc.). The focus of the estate is on sustainability and forest resilience, with over 100 different species having been planted. The woodlands produce around 1500 tons of new wood per year.

Due to extensive detailed planting and harvesting records maintained by the Norbury Park Estates and by our other suppliers over the past centuries, we can provide unparalleled provenance for the timber we supply.



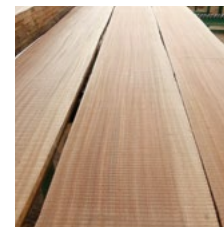
We are passionate about our trees our timber and the end-use of everything we sell. We want you to be confident in the knowledge that the wood we supply, and you purchase, will be of the highest quality and that it will serve its purpose in the most sustainable way possible.



HARDWOOD



SOFTWOOD



TROPICAL



We pride ourselves on producing the very best-quality timber for posterity.

Our Sawmill



Our timber is sawn to size and cut on-site. The best quality pieces are cut on our Mebor 1200 saw, meticulously stored and air dried and then finished in a wood kiln to produce constant top quality, ready-to-use timber.

WE STOCK THE FOLLOWING SPECIES:

HARDWOOD: Ash, alder, beech and spalted beech, English oak, sweet chestnut, sycamore.

SOFTWOOD: Cedar of Lebanon, Douglas fir, larch, redwood (coast and giant), sequoia, wellingtonia, yew.

AMERICAN HARD WOODS: ash, hard maple, red oak, white oak, tulipwood, black walnut.

REST OF THE WORLD HARDWOODS: Dark red meranti, European CND steamed beech.

Our fascination with trees had led us to acquire some extraordinary tropical hardwood trunks. These are up to 20 tons in weight, 30 feet long and have been cut and dried to produce exotic timber pieces; afzelia, padouk, iroko, wenge and utile to name but a few.

We have installed in our timber milling facility a Mebor 1200 Super Profi sawmill, manufactured in Slovenia and hand-built in our mill house. With impressive cutting capacities, we can mill boards up to 1100mm wide and 11.2m in length and handle butts up to 1400mm in diameter.

This exceptionally wide cut and long bed also allows us to cut unusual and complex forms of timber.

As well as large post and beam timbers, we stock timber framing blades with impressive deflection dimensions and heights.

Delivery can be organised and costed within the UK and Europe.



A photograph of two men in high-visibility yellow vests and dark shirts, looking down at a large, light-colored wooden beam. They are in a large industrial facility with high ceilings and other timber stacks in the background.

Air Drying

Our air drying buildings are designed to optimise the passive drying of timber using natural airflow and ambient conditions.

The timber is protected from invasive insects, kept out of direct sunlight, with weekly inspections to record moisture content, drying stability which ensures optimum timber condition.

We hold extensive stocks of air-dried timber with moisture content being between the range of 18% to 22%.

Kiln Drying

Most types of wood take about one year per inch of thickness to dry out, once dried the kiln drying process can begin.

We use a British built computer-controlled steam drying kiln. The electricity required is generated by solar photovoltaic panels situated on the roofs of our timber drying buildings. Heat is generated using a wood chip burner, with the fuel

coming from timber harvested on the estate. With skilled management of the drying process, we can produce extraordinarily stable kiln dried timber with a moisture content of 12% to 15%.

If you have any questions about our milling process, please get in touch, we will be happy to help.

products

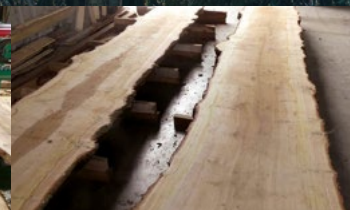
BEAMS

We hold extensive stocks of beams and posts in oak, ash, many softwoods and West African species. These are fresh sawn, air dried and appropriately cut to achieve optimum stability.



BOARDS

We supply air and kiln dried boards cut to size. We can also cut exceptionally wide boards up to 11m in length, in a wide range of native and tropical timbers. Ideal for high impact feature flooring.



CLADDING

We supply fresh sawn to size feather edge, waney edge and square edge cladding. Timber cladding is a good way of changing the look of a building and protecting it from the elements.



ENGINEERED FLOORING



Our flooring is produced from English oak and ash which has been sourced from Norbury Park Estates. The wood has been quarter-sawn for its beauty and stability.

All our engineered flooring is 20mm thick and made up of a high-quality multi-layered birch plywood backing with a 6mm thick solid timber wear layer bonded onto it. This makes our flooring extremely stable and versatile, especially good for those rooms with underfloor heating systems.


The 6mm wear layer produces a floor with an extremely long service life. The layer can be sanded and re-finished several times due to the thickness of this durable solid timber facing.

We can produce boards up to 290mm in width and up to 4.8m in length, thus offering more options for your feature flooring.

All flooring comes shrink-wrapped to prevent moisture ingress with the quantity carefully selected to match your required area.

We also produce herringbone pattern quarter-sawn oak Versailles panels, set out in 1m² squares, allowing you to create a stunning centrepiece for your floor. You could really set your flooring project apart by having these panels throughout the whole room.

products



To date, a total of 380 acres of new
woodland has been planted with
more than half a million trees.

The current owners of the Estate purchased the land in 2009. They are passionate about the environment and their wood and work tirelessly ensuring the resilience and sustainability of their woodlands are a priority.

The Norbury Park Estate

Since 2009, the Estate land has been planted with 375 acres (150 hectares) of new woodland.

When mature, this will produce approximately 1,000 tons of wood per year. Much of the land is situated at the terminal glaciation zone from the last Ice Age and comprises of mixed clay/peat/sandy soils of poor quality (agricultural grade 3) that had been largely used for cattle grazing.

The Estate has implemented an active re-forestation programme, by planting 70 acres of new trees per year on poorer parts of the arable land. To date, a total of 380 acres of new woodland has been planted with more than half a million trees.

Norbury Park Estate aims to plant more trees and allow spontaneous regeneration of existing species to ensure their woodland cover increases, and never decreases in the decades to come.



In 2014 Norbury Park Estate were delighted to have been granted a Royal Forestry Society award for 'Planting Woodlands for Climate Change' and in 2018, we were honoured with a visit from HRH the Prince of Wales.

Active re-forestation
programme, by planting
70 acres of new trees
per year



The world's forests, woods and trees are under attack.

Woodland Research

In an attempt to understand and perhaps mitigate some of these factors, Norbury Park Estate is supporting a huge international experiment in climate change called BIFoR (Birmingham Institute of Forest Research) in collaboration with the University of Birmingham.

In the largest experiments of its type in the world, fully mature English oak trees in a natural woodland setting are being incubated in an enhanced carbon dioxide environment predicted for the year 2045.

Only in this way, will we know how the trees and the whole ecosystem of the woodland will respond to rising CO2 pollution.



Norbury Park is also at the leading edge of new research into the benefits of 'intimate' mixed-species plantations, where growing large numbers of different species (many non-native) in close proximity, this appears to result in faster growth rates and reduced disease.

Uniquely to Norbury Park, we have planted an area of 12 acres which is being watered from a reservoir initially designed for irrigating potatoes! From this experimental plot, we hope to be able to grow an oak tree in 50 /70 years - less than half the time it normally takes.





Let's talk about the timber...

Call **01785 284 718** or email sales@shelmoretimber.co.uk

Campions Buildings | Manor Drive,
Norbury Junction | Stafford | ST20 0RL

The Showroom

We like to operate an 'Open Door Policy' for anyone in the trade, also all wood enthusiasts who would like to visit during working hours.

Our Showroom is home to some stunning oak and ash flooring, a beautiful English oak staircase along with some exquisite internal wall boarding's.

Our imposing oak desk, table and fireplace, all make our showroom an impressive place to showcase some of the products which have been created from our timber.

www.shelmoretimber.co.uk



Premium Quality Seasoned Hardwood Logs

All our firewood is sourced from Norbury Park's 700 acres of award-winning, sustainable woodland.

Where more than 380,000 new trees have been planted in the last 10 years, creating over 370 acres of new woodland. Our firewood logs are of the highest quality; they are 100% hardwood and sourced from our estate woodlands.

Stored over a period, so they are seasoned and contain 20% or less moisture content when sold, they really do give a lovely warmth to any cold room. The logs are felled, processed, air dried and stored on the estate, to produce high-quality firewood.

-
- Supplied in 2m³ Loads
 - Competitively Priced
 - 100% Hardwood
 - Seasoned (<20% or less moisture content)
 - Sustainable
 - Minimal Carbon Footprint
 - Locally Grown & Harvested
 - Free delivery included within an 8-mile radius of Norbury Park
-

To place your order, please contact us by calling 01785 284 718 or email sales@shelmoretimber.co.uk

